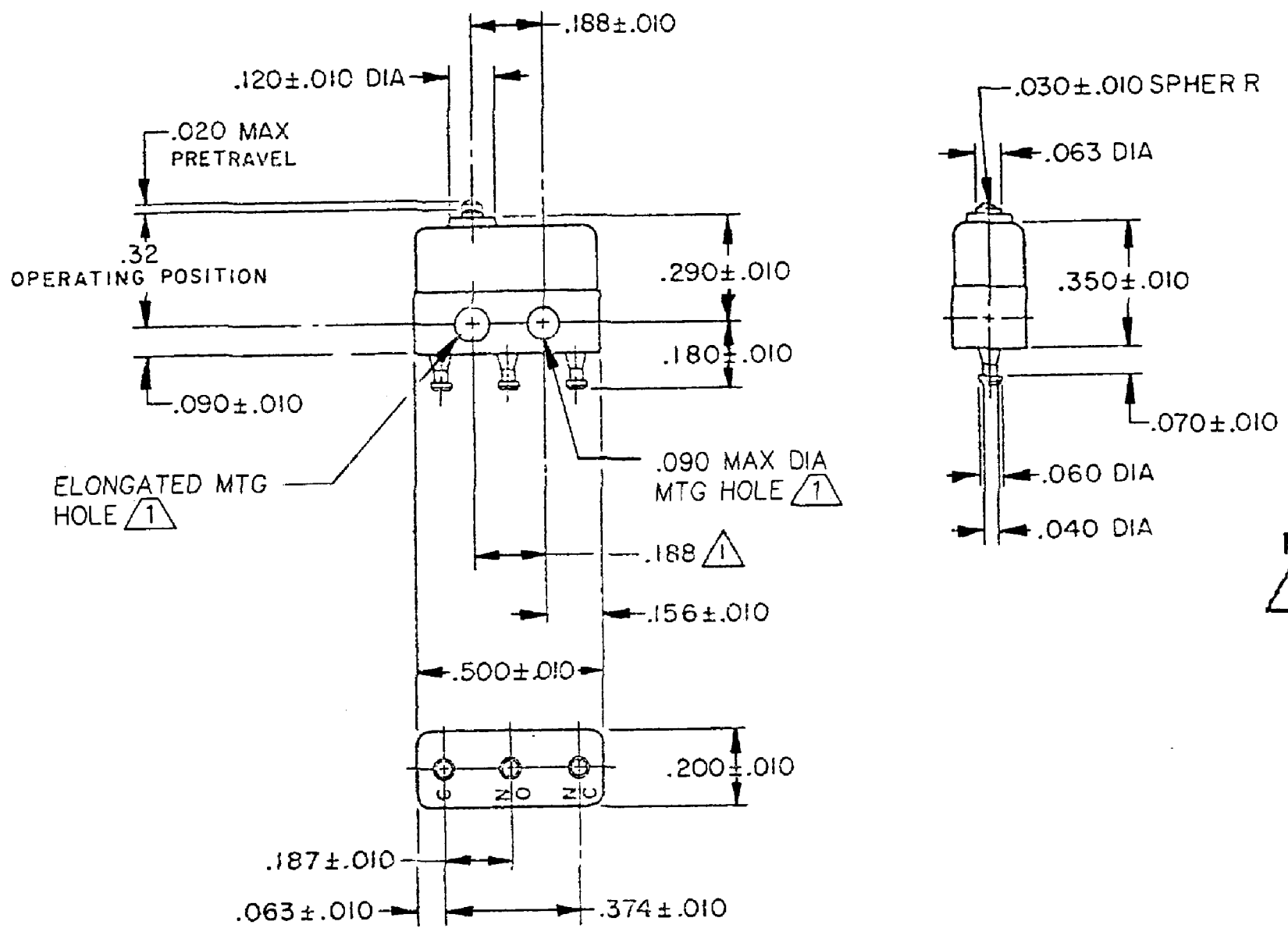
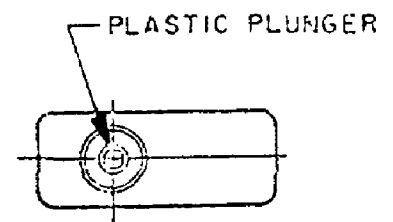


HONEYWELL  
PART NUMBER  
11SX1-T  
PRODUCT CODE  
VDJ1000

REV	DOCUMENT	CHANGED BY	CHECK
9	0038448	VS 28APR08	BLR



**NOTES**  
 1 MOUNTING HOLES WILL ACCEPT PINS OR SCREWS OF .087 MAX DIA ON .188 ± .002 CENTERS  
 2 - TERMINALS ARE PLATED FOR SOLDERING  
 3 - SWITCH WILL WITHSTAND TEMPERATURE OF 250° F

RELEASE NO.	PR-298
REPLACES	

**CHARACTERISTICS**

OPERATING FORCE - - - -3.5 OZ MAX

RELEASE FORCE - - - - .75 OZ MIN

DIFFERENTIAL TRAVEL - - - .001 MAX

OVERTRAVEL - - - - .004 MIN

**ELECTRICAL DATA**

CONTACT ARRANGEMENT  
SPDT

28 VOLTS DC RATING

	SEA LEVEL	50,000 FT
INDUCTIVE	2 AMP	-
RESISTIVE	3 AMP	-

APPROVALS

KEMA, CE	3A 250V~ T125 5E4	CE
UL, CSA	3A 250 VAC	UL BRAND L122A

DESIGN UNITS: INCH

TOLERANCES UNLESS NOTED:

NO PLACE	X	±
ONE PLACE	.X	±
TWO PLACE	.XX	±
THREE PLACE	.XXX	±
FOUR PLACE	.XXXX	±
ANGLES		±

THIRD ANGLE PROJECTION

DRAWN	SPK	08FEB08
CHECK	RJ	08FEB08
THIS DRAWING COVERS A PROPRIETARY ITEM AND IS THE PROPERTY OF HONEYWELL. THIS DRAWING IS NOT TO BE COPIED OR USED WITHOUT THE PERMISSION OF HONEYWELL.		
INTERPRET PER ANSI Y14.5M-1982 OTHER HONEYWELL ENGINEERING STANDARDS MAY APPLY		
RASTER		

**Honeywell**

TITLE

SWITCH - BASIC

SIZE	TYPE	DRAWING NAME	REV
B	I	11SX1-T	9
SCALE	-	WEIGHT: .003 LB MAX	SHEET 1 OF 1